

# 2015-17 Strategic Planning Framework





# BETTER LIVES, STRONGER COMMUNITIES

## VISION

Our vision for Skagit County is a respectful community where everyone has the opportunity and support to be safe, healthy and successful.

## MISSION

Our mission is to foster and advocate for self-sufficiency among low-income people in Skagit County.

## VALUES

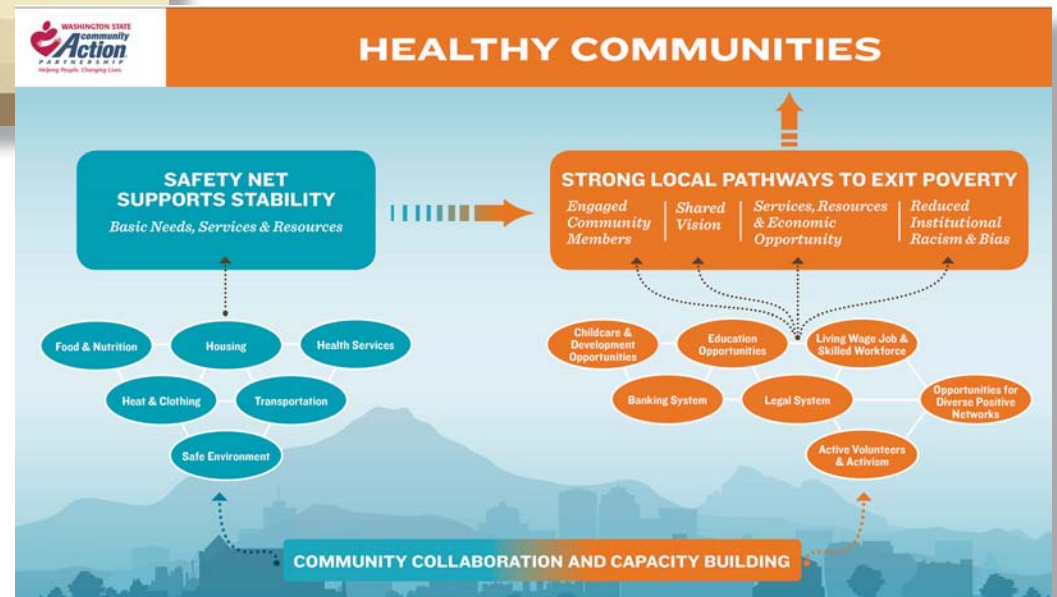
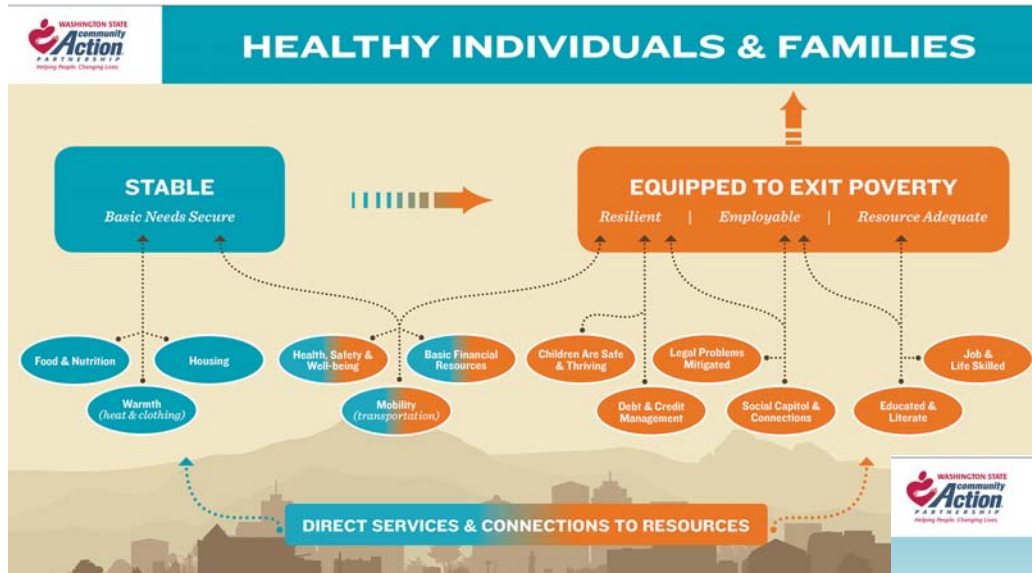
Community Action is guided by the following principles:

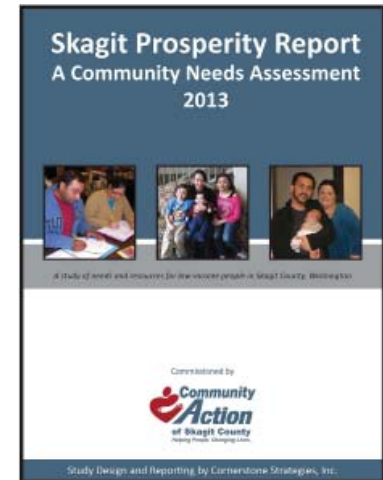
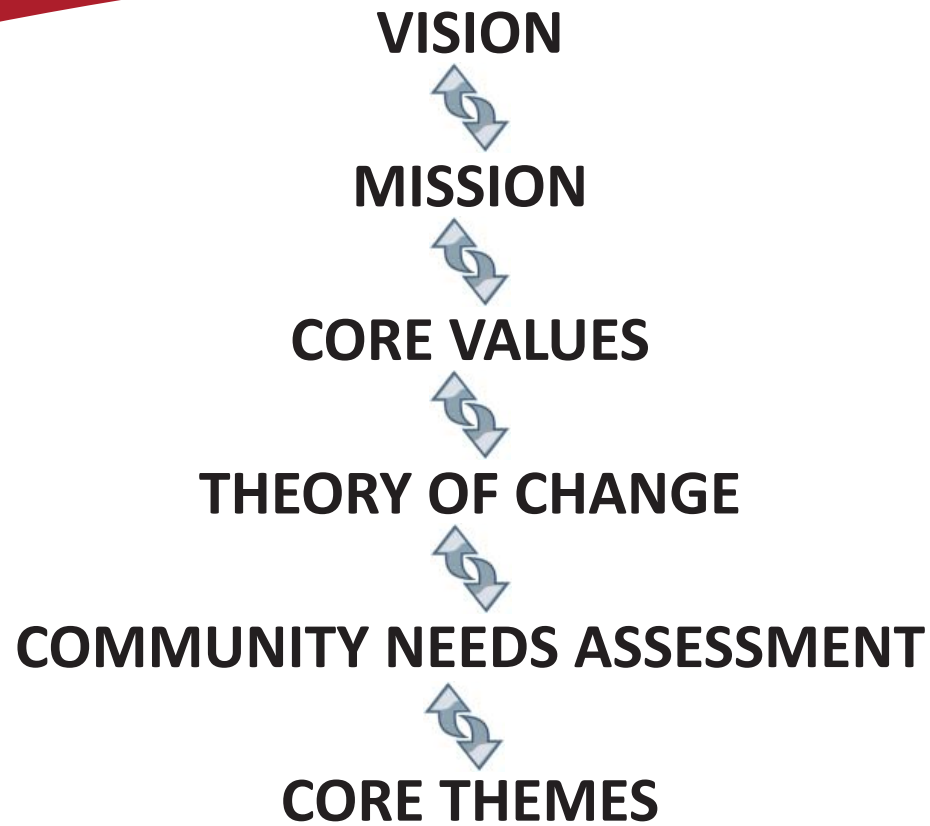
- Integrity
- Compassion
- Respect
- Dignity
- Empowerment
- Commitment

*The heart of Community Action  
is creating a spirit of hope by  
helping people help themselves  
and each other.*

# THEORY OF CHANGE

Our work and planning to achieve our mission and realize our vision are guided by a Theory of Change developed by the WA State Community Action Partnership that has two main components, Healthy People (“Better Lives”) and Healthy Communities (“Stronger Communities”).





# 2015-17 STRATEGIC PRIORITIES

## 1. Core Theme: **Better Lives**

### OBJECTIVE: Stabilizing Lives

#### A. Food & Nutrition

Community Action will help lead the local hunger-response and food-support system from a focus on quantity to a focus on nutritional quality.

#### B. Building a Family's Basic Resources & Resiliency

Community Action will work in partnership with the families we serve to identify basic resources to help them increase their resiliency and meet their life goals.

#### C. Housing

Community Action will lead our community in developing an effective Coordinated Point of Entry system that makes a meaningful impact on local homelessness.

#### D. Health

Community Action will provide a central access point for people who need healthcare coverage, and provide a leadership role in adult dental access and the evolution of a local dental safety net.

### OBJECTIVE: Equipping Families for Success

#### E. Employability.

Community Action will work in partnership with the people we serve to develop career plans, and begin, or further, their journey on a career pathway.

#### F. Education

Community Action will provide basic education for adults to increase their opportunities for a higher income, and facilitate transitions to post-secondary education, while building family stability so that their children can thrive in school and life.

#### G. Asset Building

Community Action will work with families to build assets, repair credit, manage their budgets, plan for their future, and find a financial home.



## 2. Core Theme: **Stronger Communities**

### OBJECTIVE:

#### A. Coordination/Catalyst for Change

Community Action will take a leading role (or be a strong participant) in coalition planning and strategic partnerships that lead to significant community impact.

#### B. Engagement

Community Action will provide a dynamic path for community members to engage in our mission and expand their positive impact on Skagit County.

## 3. Core Theme: **High-Impact Organization**

### OBJECTIVE:

#### A. Customer Focused

Community Action will emphasize high-quality, innovative service responsive to and informed by the voice of our customers and partners.

#### B. Engaged Workforce

Community Action will foster positive career and leadership development across our entire workforce.



#### C. Continuous Improvement

Community Action will develop and track key indicators of success to guide the continuous improvement of our work to stabilize lives, equip families for success and strengthen community.

#### D. Financial Health & Stability

In order to ensure high quality customer service, Community Action will maintain the financial health of our organization.



330 Pacific Place • Mount Vernon, WA 98273 • [info@communityactionskagit.org](mailto:info@communityactionskagit.org) • [www.CommunityActionSkagit.org](http://www.CommunityActionSkagit.org)